



Adding New Menus and Options

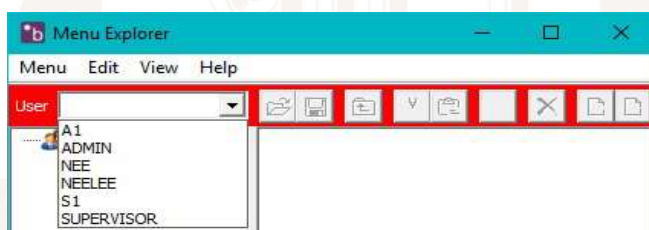
If you'd like to customise your Merlin software package, or add and remove new menu options, follow the instructions below;

Adding a new Menu:

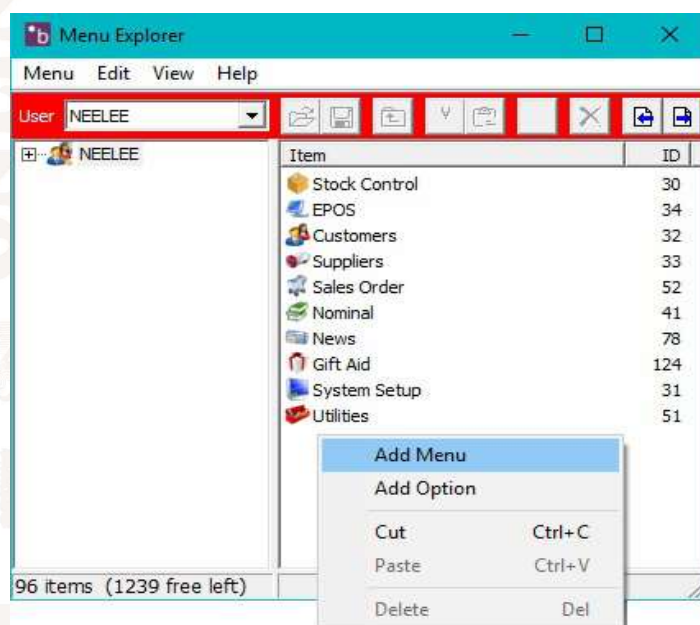
1. Open “**System Setup**” from the left sidebar and select the “**Menu Editor**” section.



2. Select the user from the drop down Menu.



3. Right click in a blank space on the right side, then click “**Add Menu**”.



Merlinsoft

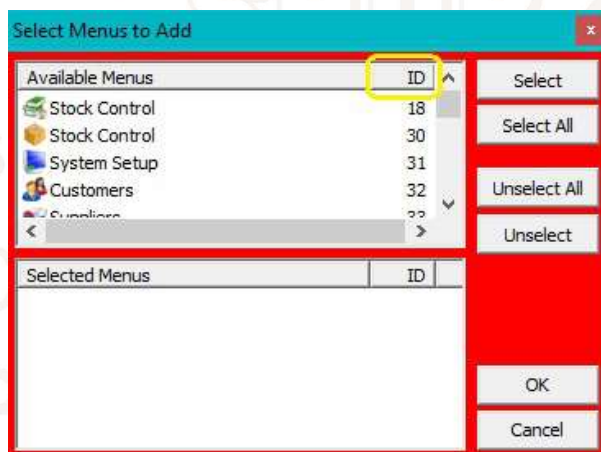
www.merlinsoft.co.uk
0 1 2 2 6 2 9 4 4 1 3
sales@merlinsoft.co.uk

Merlinsoft//

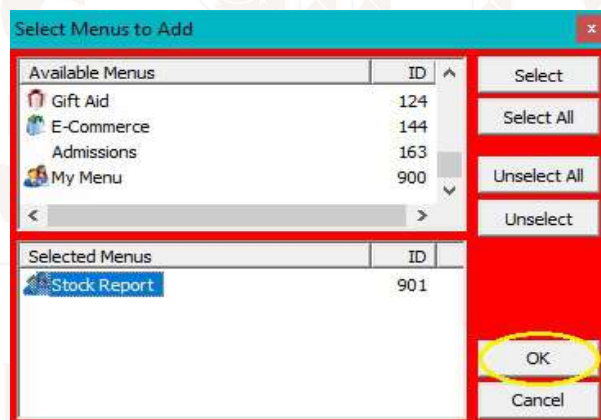
Market leaders in design and innovation.
Empowering customers by providing
tailored solutions to meet individual needs



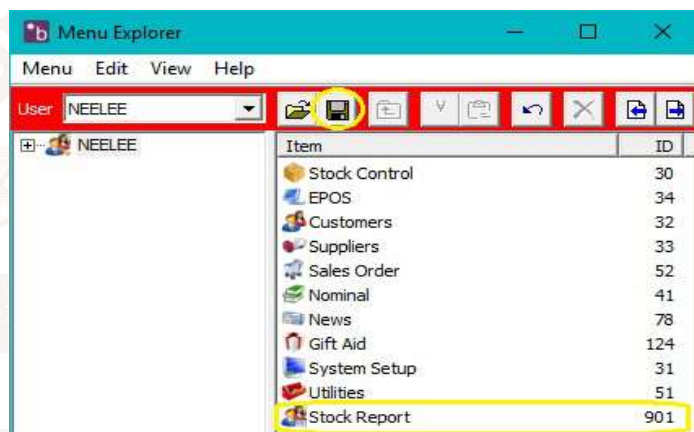
4. Sort the list by “ID” (click the heading “ID” to do this).



5. Search the list and double click “The item you'd like to add” then press “OK”.



6. Then press save (The disc icon).



Merlinsoft

www.merlinsoft.co.uk
01226294413
sales@merlinsoft.co.uk

Merlinsoft//

Market leaders in design and innovation.
Empowering customers by providing
tailored solutions to meet individual needs



7. Exit this menu and re-load Merlin.

Adding an option to a menu:

1. Open “System Setup” from the left sidebar and select the “Menu Editor” section.



System Setup

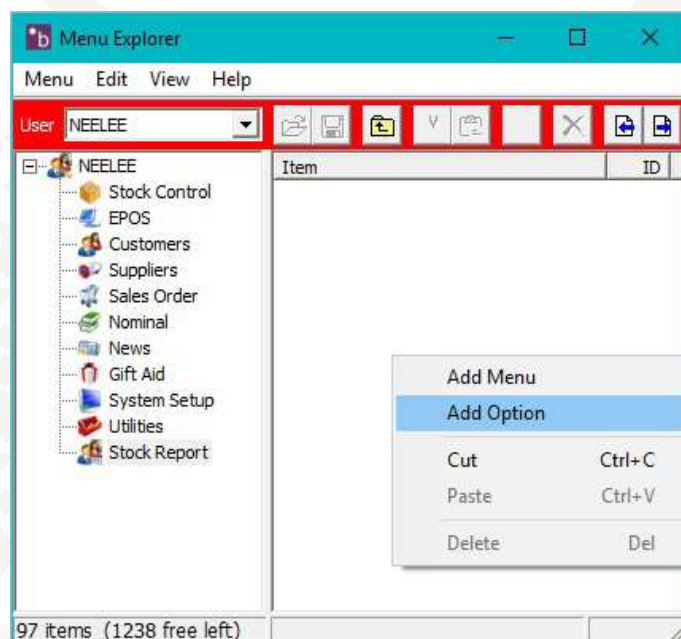


Menu Editor

2. Select the user from the drop down Menu.

3. Double Click the menu you'd like to add an option to.

4. Right Click in a blank space on the right side, then click “Add Option”.



5. Sort the list by “ID” (click the heading “ID” to do this).

6. Search the list and double click “The item you'd like to add” then press “OK”.

7. Then press save (The disc icon). Exit this menu and re-load Merlin.



Merlinsoft

www.merlinsoft.co.uk
0 1 2 2 6 2 9 4 4 1 3
sales@merlinsoft.co.uk

Merlinsoft//

Market leaders in design and innovation.
Empowering customers by providing
tailored solutions to meet individual needs